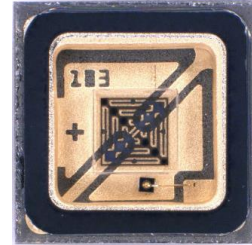
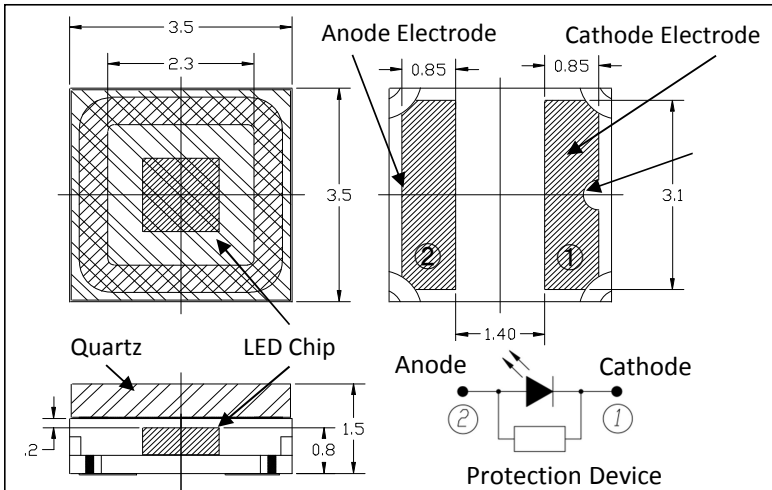


**MODEL xFxXU-0F001 series**

**3.5 x 3.5mm Metal Sealed SMD Flat Top Type**

**Mechanical Specifications and Materials (Unit: mm)**



**Product ID**

**280nm: DF8XU-0F001**

**310nm: UF1XU-0F001**

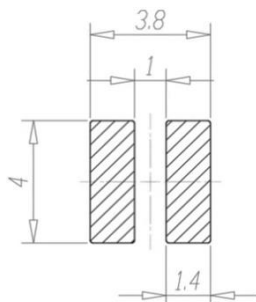
**325nm: UF3XU-0F001**

**340nm: UF4XU-0F001**

**Typical Optical-Electrical Characteristics (I<sub>F</sub>=350mA, T<sub>a</sub>=25°C)**

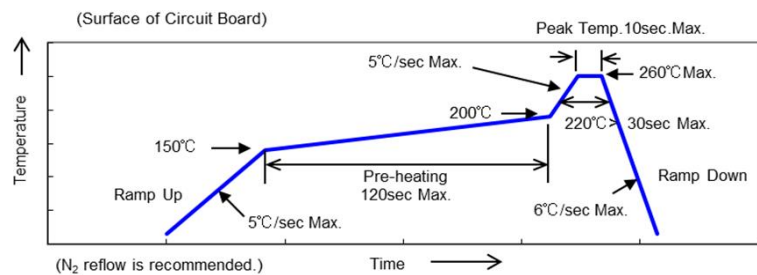
Item	Symbol	Unit	DF8XU			UF1XU			UF3XU			UF4XU		
			Min	Typ	Max	Min	Typ	Max	Min	Typ	Max	Min	Typ	Max
Peak Wavelength	$\lambda$	nm	270	280	290	303	308	313	320	325	330	335	340	345
Radiant Flux	P <sub>o</sub>	mW	20	25	-	20	36	-	20	30	-	20	30	-
Full Width at Half Maximum	$\Delta$	nm	-	12	-	-	14	-	-	13	-	-	10	-
Forward voltage	V <sub>F</sub>	V	-	5.4	-	-	5.3	-	-	5.1	-	-	5.0	-
Viewing Half Angle	2 $\theta_{1/2}$	deg.	-	120	-	-	120	-	-	120	-	-	120	-

**Recommended solder pad**



Unit : mm

**Recommended reflow soldering profile**



**CAUTION**

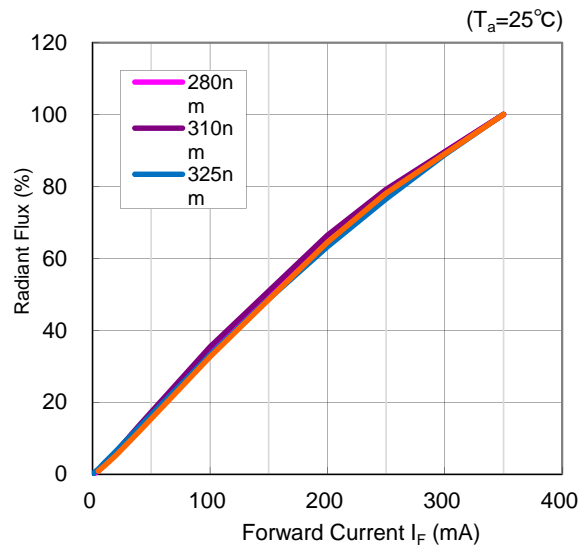
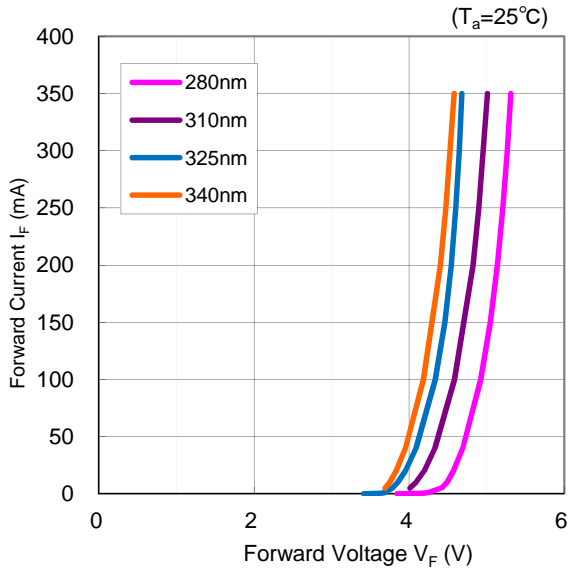
- LEDs emit very strong UV radiation.
- Don't look directly into the LED light. UV radiation can harm your eyes.
- To prevent even inadequate exposure, wear protective eyewear.
- If LEDs are embedded in devices, please indicate warning labels against the UV light LED used.
- Keep out of reach of children.
- Specification and dimension are subject to change for improvement without notice.

**MODEL xFxXU-0F001 series**

**3.5 x 3.5mm Metal Sealed SMD Flat Top Type**

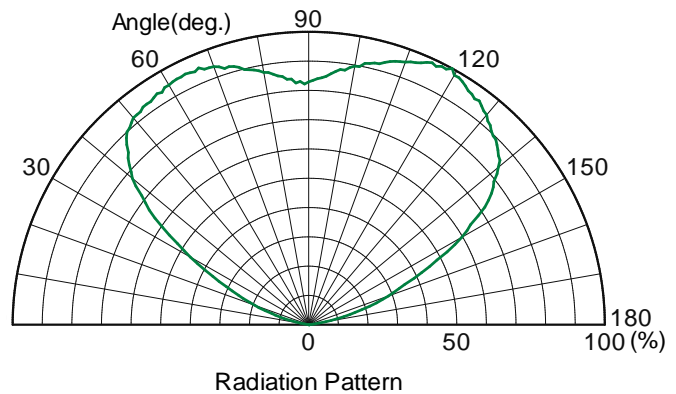
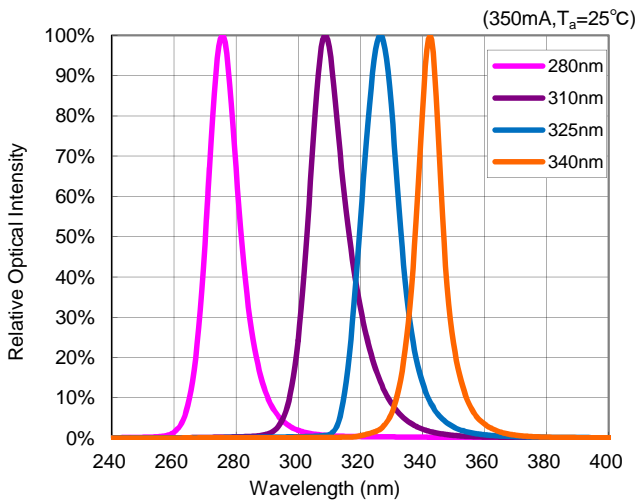
**Forward Current vs Forward Voltage**

**Forward Current vs Radiant Flux**



**Spectrum**

**Radiation Pattern**



[Japan] Hidemi Yano e-mail: yanoh@dowa.co.jp

DOWA Electronics Materials Co., Ltd

Akihabara UDX Bldg. 4-14-1 Sotokanda, Chiyoda-ku, Tokyo 101-0021, Japan / Phone: +81-3-6847-1253

[USA] Hiromichi Asahara e-mail: asaharah@dicny.com / Akihisa Yamaguchi e-mail: akihisa@dicny.com

DOWA International Corp. San Jose office

4320 Stevens Creek Blvd. Suite 125, San Jose CA 95129, USA / Phone: +1-408-236-7560

[EU] DOWA HD Europe GmbH

Ostendstrasse 196, D-90482, Nurnberg, Germany / Phone: +49-911-56989-320

